

A safe and responsible Temporary Workforce Lodge

Engagement with local Indigenous communities and community representatives on the Temporary Workforce Lodge strategy started in 2019. Key actions we're taking to ensure the Temporary Workforce Lodge is operated safely and responsibly include:

Community safety and respect

We've been working directly with local Indigenous communities and agencies on how to best ensure the Workforce Lodge operates safely and responsibly, with a focus on the safety of vulnerable populations. Recommendations from these discussions will be incorporated into the Workforce Lodge operations, including mandatory training related to harassment, violence, bullying, cultural awareness and consent.

- **Worker Code of Conduct:** Outlines requirements for workers on the project on topics including drug and alcohol use, respectful behaviour and after-hours conduct.
- **Mandatory Indigenous cultural awareness training:** Teaches workers about the local Indigenous Peoples, their culture and history and what it means to be a guest in their territory.

Feedback from the community

We considered the feedback we received from the community, and we're taking a number of steps to ensure the Workforce Lodge is operated safely and responsibly. We'll continue to listen and adapt accordingly.

Full-service lodge

On-site food, medical and recreational facilities will reduce pressure on local services. Waste disposal, power and water will be managed to the highest standard, and there will be 24-hour on-site security.

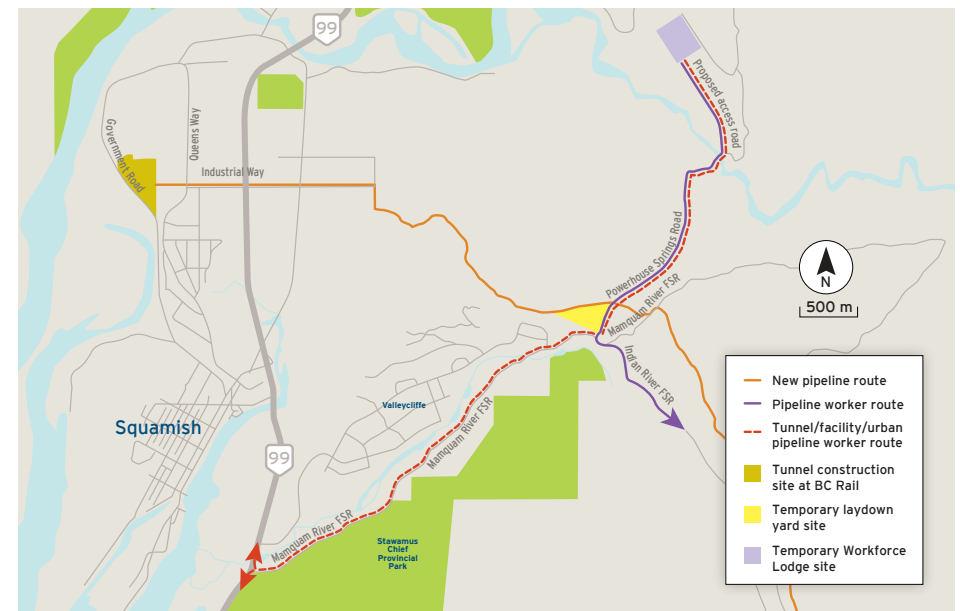
Supporting local businesses

We believe the Eagle Mountain - Woodfibre Gas Pipeline Project can deliver real benefits for the local economy, including opportunities for Squamish companies to support the Workforce Lodge construction and operation.

Traffic and trails

Locating the Temporary Workforce Lodge site on Powerhouse Springs Road north of the Indian River Forest Service Road significantly reduces project traffic in nearby communities, as the majority of workers can travel from the lodge to our worksites without going through Squamish or using Highway 99.

Access to local trails will be maintained as much as possible; however, there may be some temporary trail closures during construction to ensure crews can complete work safely and as quickly as possible. If a temporary trail closure is planned, we'll work with local community groups to help inform the public in advance.



Scan here to learn more about the Eagle Mountain - Woodfibre Gas Pipeline Project.