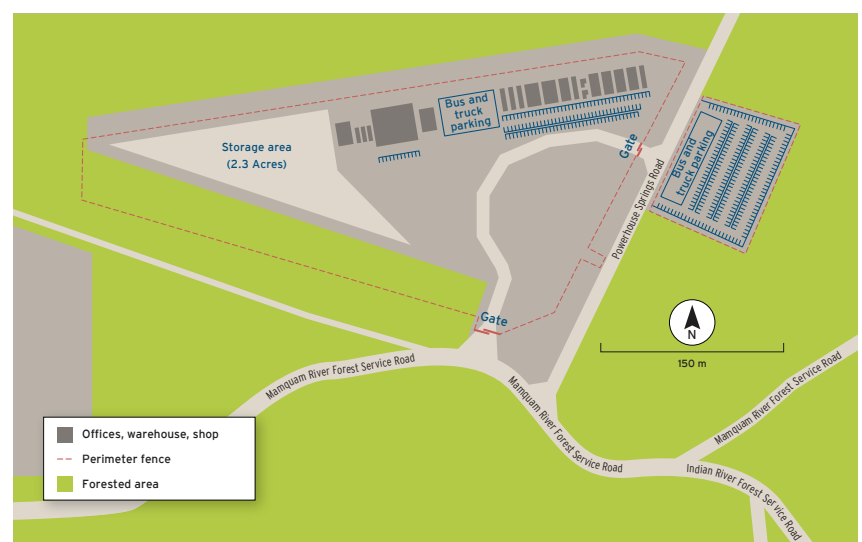


# Temporary laydown yard

**To facilitate construction on the EGP Project, we're planning to develop a laydown yard/staging area to help coordinate construction activities.**



## Permitting process

- We've applied for a Temporary Use Permit for the laydown yard from the District of Squamish.

## Location

- The site would be located on private land near the intersection of Mamquam River Forest Service Road and Powerhouse Springs Road.

## Minimizing disruptions and traffic impacts

- The site was chosen for its close proximity and access to our pipeline route near Indian River Forest Service Road.
- The large stand of trees along the site perimeter will help provide a visual and noise barrier.
- We're taking additional steps to reduce noise, such as being mindful of back-up alarms and generators in our site design.

## Intended use

- Staff would work out of the site office during construction hours.
- Construction crew meetings would be held on site.
- Crews would gather at this location to be shuttled to construction areas.
- Construction materials, vehicles and equipment would be stored on site.

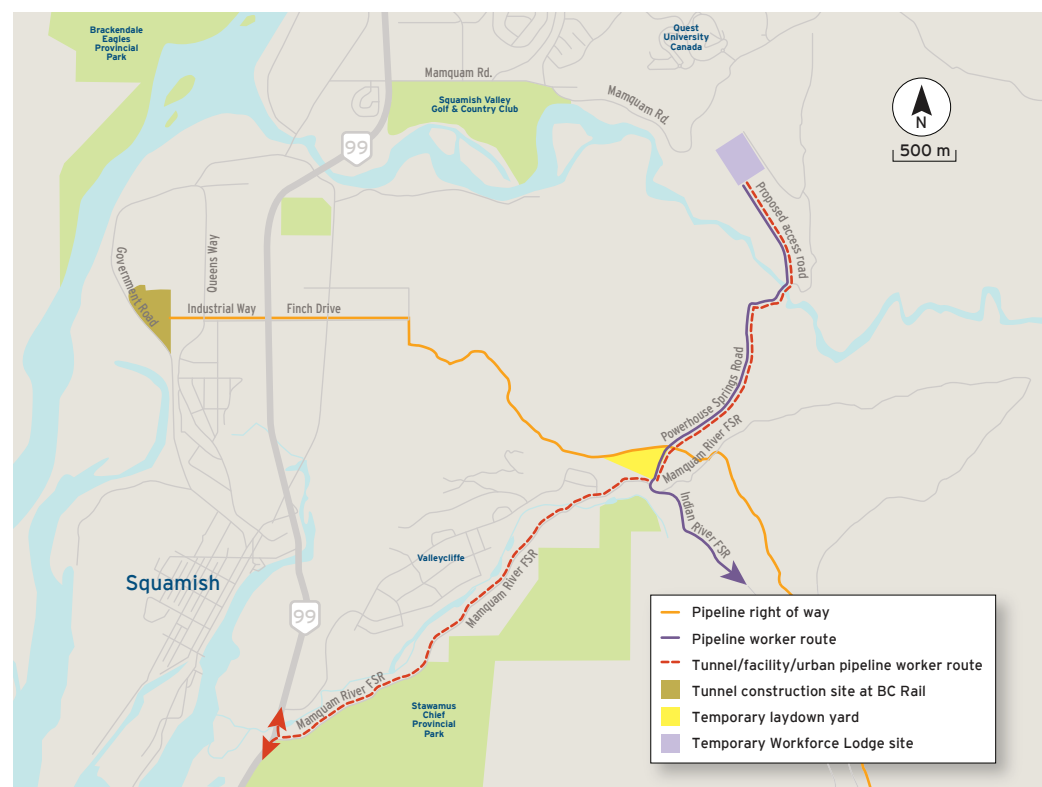
# Temporary Workforce Lodge

Based on input from local Indigenous communities, local governments, stakeholders and the broader community, we're proposing a Temporary Workforce Lodge with amenities for non-local construction workers. This is a key mitigation measure to reduce EGP Project-related demand on local accommodation, health care and social services during construction. Once operational, the lodge would house up to about 600 workers during peak times. We've applied for a Temporary Use Permit for the Temporary Workforce Lodge from the District of Squamish.

## Full-service lodge

Lodge amenities include:

- full dining and food preparation facilities
- recreational and leisure facilities, including a fully equipped workout room and games entertainment area
- private bedrooms
- social programming to provide opportunities for leisure and social interaction when off-duty
- Wi-Fi to support workers' family connections
- health and medical services, including health and wellness promotion programming
- 24/7 security
- waste disposal, power and water to be managed to the highest standard



## Community safety and respect

Workers will receive an orientation upon arrival including:

- mandatory training on the Worker Code of Conduct and on issues like cultural awareness, violence, consent, harassment and bullying
- Temporary Workforce Lodge rules, including a no-visitors policy at the lodge, and ongoing cultural programming

# Temporary Workforce Lodge

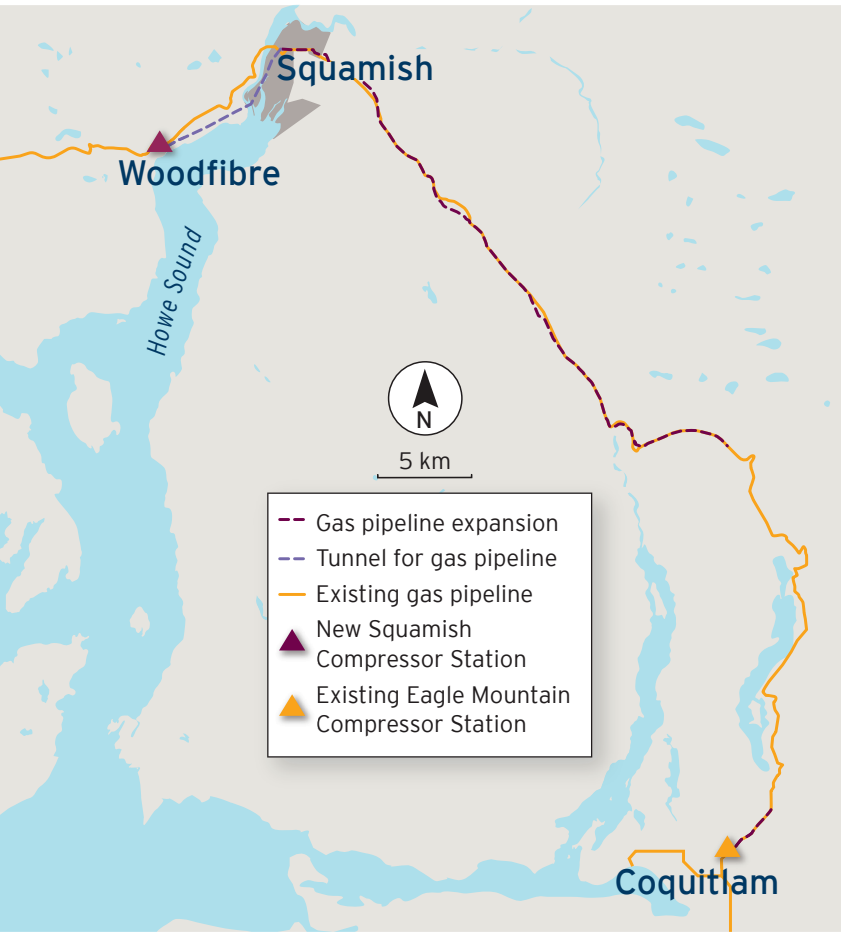
Artist renderings



# Project components and purpose

The Eagle Mountain-Woodfibre Gas Pipeline (EGP) Project will transport natural gas to Woodfibre LNG, a Liquefied Natural Gas (LNG) export facility near Squamish. The EGP Project will expand a portion of FortisBC’s existing natural gas transmission system, adding about 47 kilometres of new 24-inch gas pipeline from north of Coquitlam to the Woodfibre LNG site, and an additional three kilometres of pipe near Westwood Plateau in north Coquitlam.

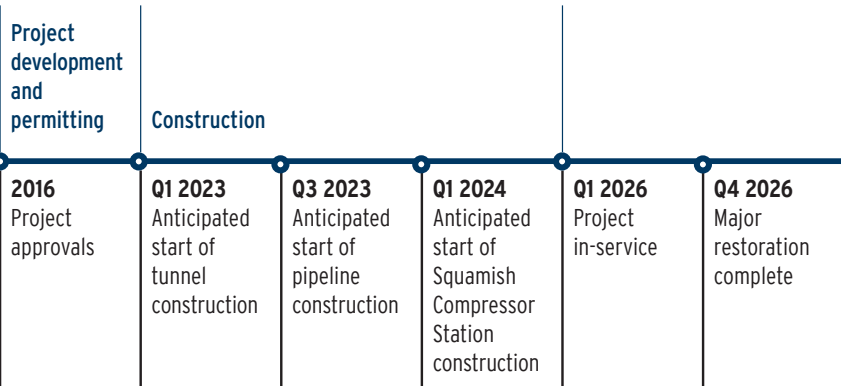
The project was approved in 2016 following rigorous environmental and socio-economic reviews by the BC Environmental Assessment Office and Skwxwú7mesh Úxwumixw (Squamish Nation).



Wide-ranging environmental and socio-economic mitigation measures have been established, including:

- protecting the Skwelwil'em Squamish Estuary by constructing a nine-kilometre underground tunnel about 30 metres below the estuary waterbed
- working closely with sə'ílłwətaʔt (Tsleil-Waututh) Nation to mitigate impacts in culturally and environmentally sensitive areas
- building a Temporary Workforce Lodge to reduce potential impacts to Squamish housing, health and recreation infrastructure
- reducing traffic impacts by constructing the Temporary Workforce Lodge near construction locations, and using multi-passenger vehicles to move workers to worksites

## Project schedule



# Approvals and ongoing community engagement

## District of Squamish Temporary Use Permits

FortisBC has applied to the District of Squamish for two Temporary Use Permits (TUPs).

- One TUP has been requested for a property on Powerhouse Springs Road for our Temporary Workforce Lodge. The TUP will allow FortisBC to develop the lodge, which is designed to reduce or eliminate potential impacts to Squamish housing, health and recreation infrastructure.
- A second TUP has been requested to facilitate a temporary laydown yard at the intersection of Mamquam River Forest Service Road and Powerhouse Springs Road. This location, near our pipeline route along the Indian River Forest Service Road, will help reduce disruptions and traffic impacts.

As part of the process, FortisBC has been consulting with the District of Squamish and the community on the TUPs.

## Ongoing engagement

FortisBC will engage regularly with Indigenous communities, the District of Squamish, stakeholders and the public throughout construction to provide project information, hear feedback and address any emerging concerns related to Eagle Mountain - Woodfibre Gas Pipeline (EGP) Project activities.

The project will use a wide range of communication methods during construction, including community meetings, website updates, digital newsletters, social media, a public information phone line and notification letters.

## Community Table

In 2019, FortisBC established a Community Table consisting of First Nations and Squamish-based organizations to help inform EGP Project planning particularly related to temporary workforce housing and socio-economic matters in the Squamish area.

The Community Table will continue to receive and share EGP Project construction-related information with the community while construction is underway.

# Worker conduct

Promoting and enforcing positive conduct and behaviour of Eagle Mountain - Woodfibre Gas Pipeline (EGP) Project workers will limit the potential for adverse interactions between the EGP Project and the community. FortisBC sets a high standard of conduct across the organization, which extends to the EGP Project and its contractors, consultants and representatives. All workers are ambassadors of the EGP Project and will be expected to act appropriately during and outside of work hours.

## Addressing community input

We've heard concerns related to community safety and have taken steps to address them:

- We developed a **Worker Code of Conduct** for all workers on the project. This outlines our expectations with respect to compliance with the law; health, safety and the environment; drug and alcohol use; respectful behaviour; and after-hours conduct.
- We are developing **Temporary Workforce Lodge rules** to provide a clear understanding regarding our expectations related to drugs and alcohol, violence and harassment, speed limits, respectful behaviour and inclusion and diversity.
- A mandatory **worker orientation** will focus on the importance of maintaining positive and respectful relationships with the surrounding communities and businesses, as well as provide training on the Worker Code of Conduct and the Temporary Workforce Lodge rules.
- The lodge will have a **no visitors policy** and **24/7 on-site security**.
- A lodge **health and medical services plan** for workers which includes wellness programming related to promoting mental health.
- Workers will be **monitored and provided with feedback** pertaining to community-related issues throughout construction.
- **Cultural awareness training** is provided for all workers in partnership with local First Nations. This will be mandatory for all EGP Project construction personnel during the onboarding process, and will include information on the culture, values and sensitivities of Indigenous Peoples.
- **Additional cultural awareness** information and programming will be provided on an ongoing basis.

# Health and safety

We've heard concerns from the community related to the demand our project may have on local health care, medical, emergency and social services as well as other infrastructure in the community. We also recognize the need to work with local service providers who may want to support our project. We developed our Community Services and Infrastructure Management Plan to address these concerns. It includes the following:

## Health and medical

- A **health and medical services plan** for workers at the Temporary Workforce Lodge will include wellness programming related to mental health.
- Trained and qualified persons will be available at all worksites to provide **sufficient medical coverage at all times**.
- Our project's medical and emergency services plan **will be coordinated with Vancouver Coastal Health**.

## Security

- **24/7 on-site security and a 'no visitors policy'** will be employed at the Temporary Workforce Lodge to provide a safe and secure living environment, and to limit security and policing interactions with the local community.
- **The community will have access to a confidential reporting line** for the Temporary Workforce Lodge to provide a reporting process for security, conduct or service issues that may need to be addressed.

## Local infrastructure

- The **Temporary Workforce Lodge** will have on-site food, medical, recreational and leisure facilities; Wi-Fi and cell service; and social programming that will support the health and well-being of temporary workers and reduce pressure on local services.
- A **site-specific waste management plan** will reduce and manage solid, liquid and hazardous waste.
- A **recreation coordination strategy** will support continual use of local trails and facilities and ensure timely communication with the recreational community while construction is underway.

## Social services

- There will be ongoing **engagement with key local non-governmental organizations** both individually, and through their participation with the Community Table.
- We'll look for ways to **invest in the community** including exploring appropriate organizations to support community health and well-being.

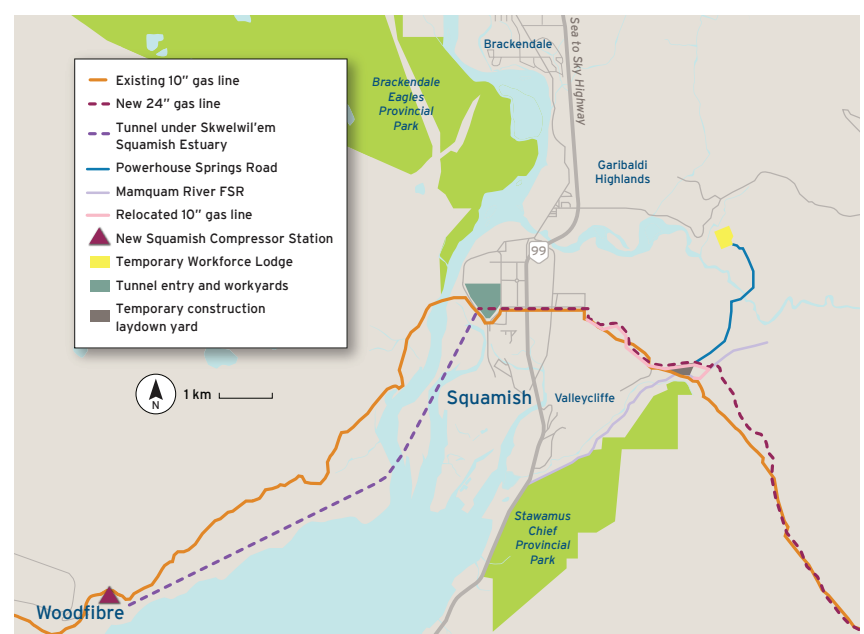
# Traffic Control Management Plan

Ensuring safe and effective traffic management during construction is a priority for the Eagle Mountain-Woodfibre Gas Pipeline (EGP) Project.

The Traffic Control Management Plan has been developed with input from Indigenous communities, the Ministry of Transportation and Infrastructure and the District of Squamish, among others. It outlines strategies and contractor requirements to mitigate the impacts on transportation systems during construction of the EGP Project.

## Key objectives include:

- **maintaining safety** for the public and workers on public roadways, walking and cycling routes and transit stops
- **reducing disruptions** to the travelling public as much as possible
- **maintaining safe access** to residences, businesses, parking areas and pedestrian routes for people of all ages and abilities
- **maintaining emergency vehicle access** at all times
- **using designated truck routes** and approved access routes



## Public notification

A comprehensive communications and community relations program will be in place to provide timely construction and traffic information about the project, including traffic pattern changes for drivers, cyclists and pedestrians.

## Communication tools will include:

- regular updates on the project website and social media
- email and mail updates
- designated project phone line
- road signage
- traffic media advisories
- communications protocol with the District of Squamish

# Temporary laydown yard selection criteria

The site we chose for the laydown yard is on private land near the intersection of Mamquam River Forest Service Road and Powerhouse Springs Road. It was considered the best choice for the project based on the following criteria:

## Close proximity to worksites and the Temporary Workforce Lodge

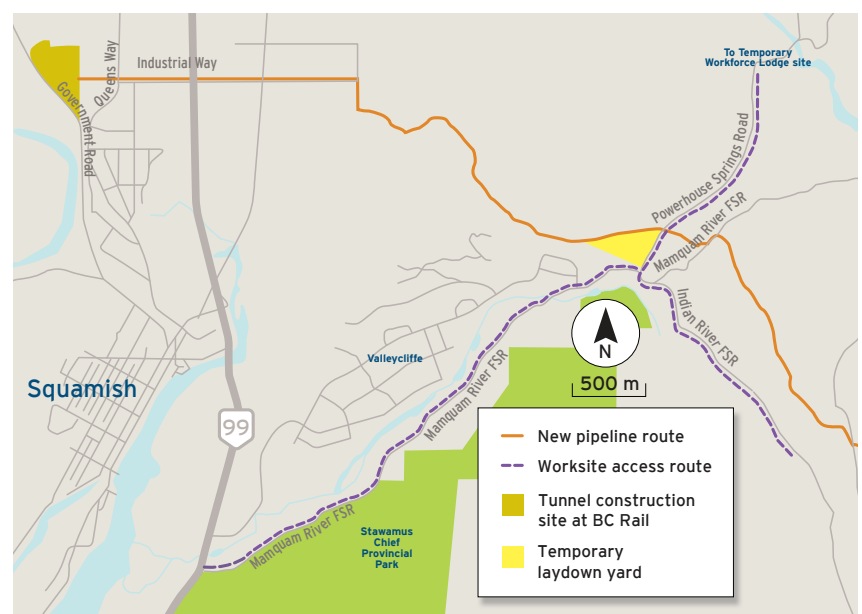
Reducing worker travel time from their accommodation to the laydown yard, and from the yard to nearby worksites, has the potential to reduce overall traffic volume, increase safety, improve efficiency and reduce environmental impact.

## Reducing impact on nearby communities

Selecting a construction laydown/staging area away from nearby communities was important to reduce impacts related to safety, traffic, noise and dust.

## Access to existing infrastructure

The site office is able to connect to existing electricity, phone and internet infrastructure.



## Site is appropriate for designated land use and scope of work

The landowner, Squamish Nation, was engaged to help identify laydown yard locations that align with their future intended land use. The site that was chosen is large enough to accommodate a site office, warehouse, storage, construction equipment and parking.

## Availability of essential support services

Services that are necessary to keep the project running, such as catering, equipment repair and maintenance, cleaning and supply delivery, are available in the vicinity. This provides opportunities for local businesses to support the project and reduces the need to import project-related services and labour from outside the community.